

TEMPLATE FOR 150G MILK CHOCOLATE EASTER EGG BOX WITH EGG SHAPED APERTURE

Chocolate type: Milk Chocolate
 Specification number: REC 3.6.3 150EGGMAN
 Last updated: 02/09/2022

Helpful advice on preparing artwork

To ensure the best & quickest results when submitting your artwork here's a little list of things to bear in mind:

1. File Formats. We can accept various file formats for artwork including:

- .pdf (portable document format)*
 - .ai (adobe illustrator file)*
 - .eps (encapsulated post script)*
 - .bmp (bitmap)
 - .jpeg (joint photographic experts group)
 - .png (portable network graphics)
 - .psd (photoshop document)
- * Preferred formats

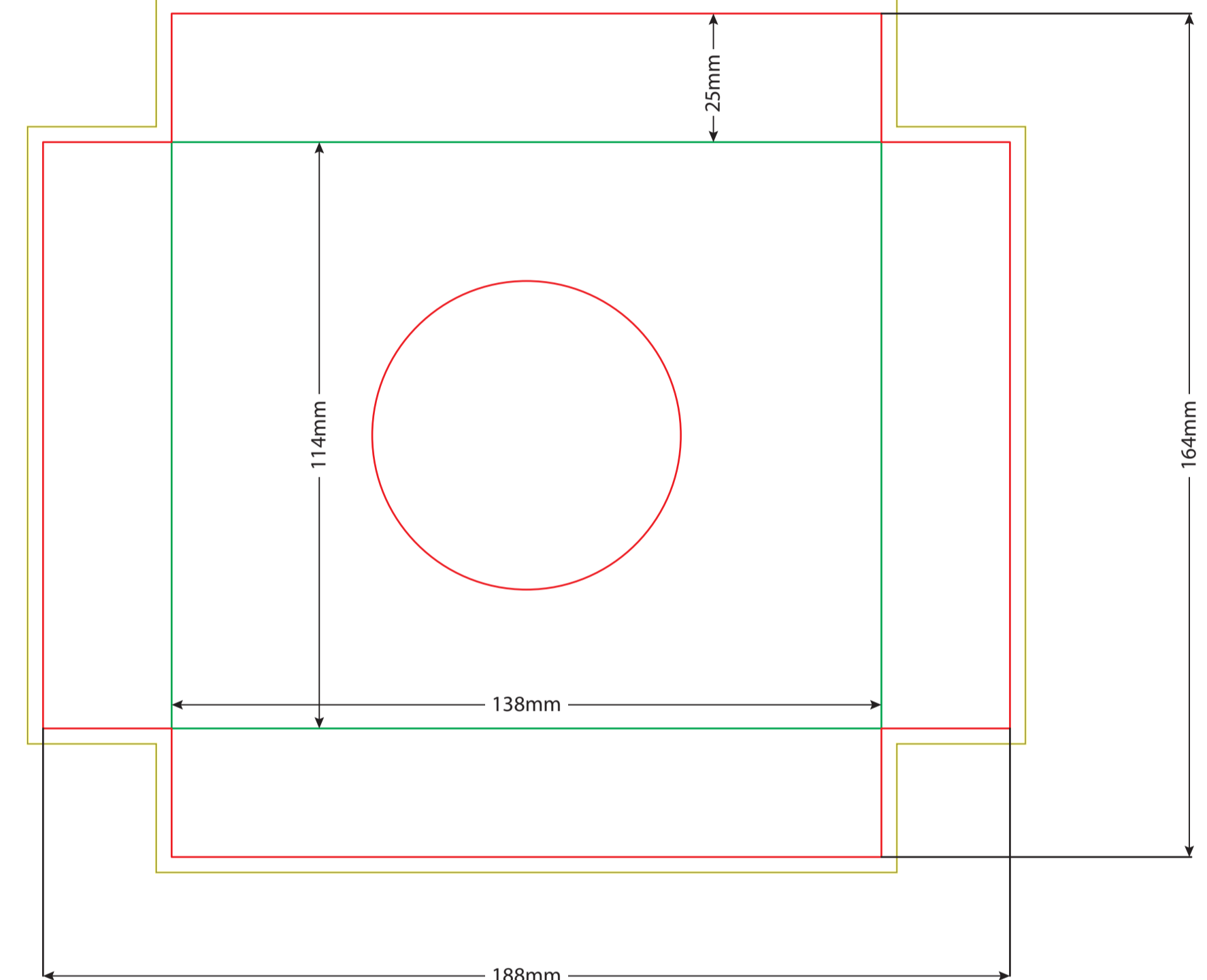
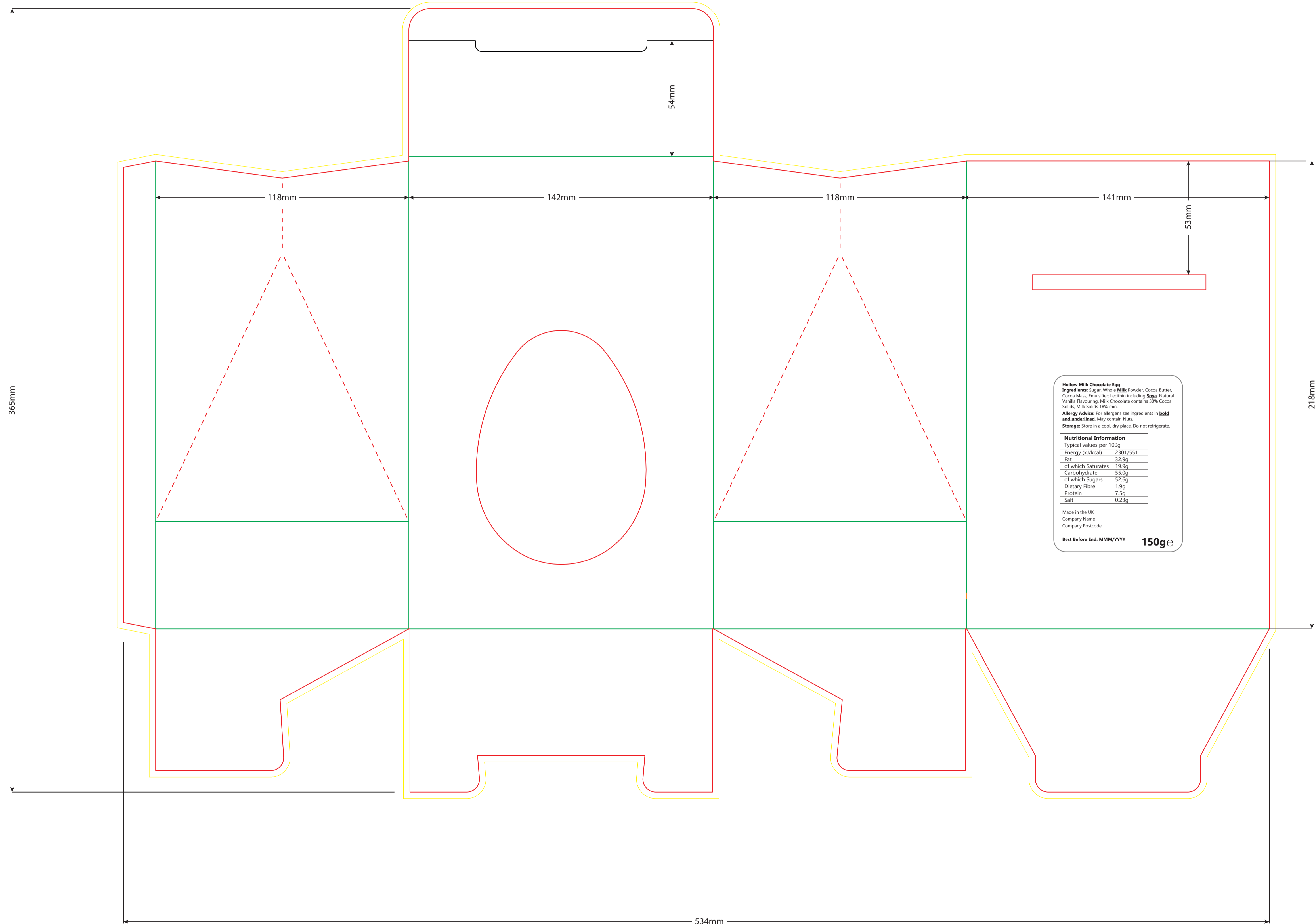
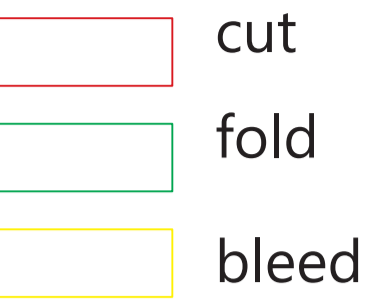
2. Resolution. Please use high resolution images. We recommend 300 dots per inch as a minimum.

3. Text/Fonts. To avoid missing font issues please either:
 Convert your text to outlines
 or,
 send the relevant font files with your artwork.

4. Template lines. Please create your artwork on a different layer to the cut, bleed and fold lines. If you're saving to a single layer file such as a .jpeg then remove these lines when you have positioned your elements and before sending us your artwork.

5. Traceability
 If your product is for resale, please don't forget this (it's a legal requirement). Replace the text "Company Name" and "Company Postcode" with your company's name and postcode

*If you're selling food in Great Britain (England, Wales and Scotland), you must also include the name and address of the UK or EU business responsible for the information on the food. If the business is not in the UK or EU, you must include the name and address of the importer." <https://www.gov.uk/food-labelling-and-packaging/food-labeling-what-you-must-show>



Hollow Milk Chocolate Egg
Ingredients: Sugar, Whole Milk Powder, Cocoa Butter, Cocoa Mass, Emulsifier: Lecithin including **Soya**, Natural Vanilla Flavouring, Milk Chocolate contains 30% Cocoa Solids, Milk Solids 18% min.
Allergy Advice: For allergens see ingredients in **bold and underlined.** May contain Nuts.
Storage: Store in a cool, dry place. Do not refrigerate.

Nutritional Information
 Typical values per 100g
 Energy (kJ/kcal) 2301/551
 Fat 32.5g
 of which Saturates 19.5g
 Carbohydrate 55.0g
 of which Sugars 52.0g
 Dietary Fibre 1.5g
 Protein 7.5g
 Salt 0.25g

Made in the UK
 Company Name
 Company Postcode
Best Before End: MMM/YYYY 150ge