

TEMPLATE FOR 80G MILK CHOCOLATE EASTER EGG BOX WITH SMALL EGG SHAPED APERTURE

Chocolate type: Milk Chocolate
Specification number: TBC
Last updated: 25/02/2022

Helpful advice on preparing artwork

To ensure the best a quickest results when submitting your artwork here's a little list of things to bear in mind:

1. File Formats. We can accept various file formats for artwork including:

- .pdf** (portable document format)*
 - .ai** (adobe illustrator file)*
 - .eps** (encapsulated post script)*
 - .bmp** (bitmap)
 - .jpeg** (joint photographic experts group)
 - .png** (portable network graphics)
 - .psd** (photoshop document)
- * Preferred formats

2. Resolution. Please use high resolution images. (we recommend 300 dots per inch as a minimum).

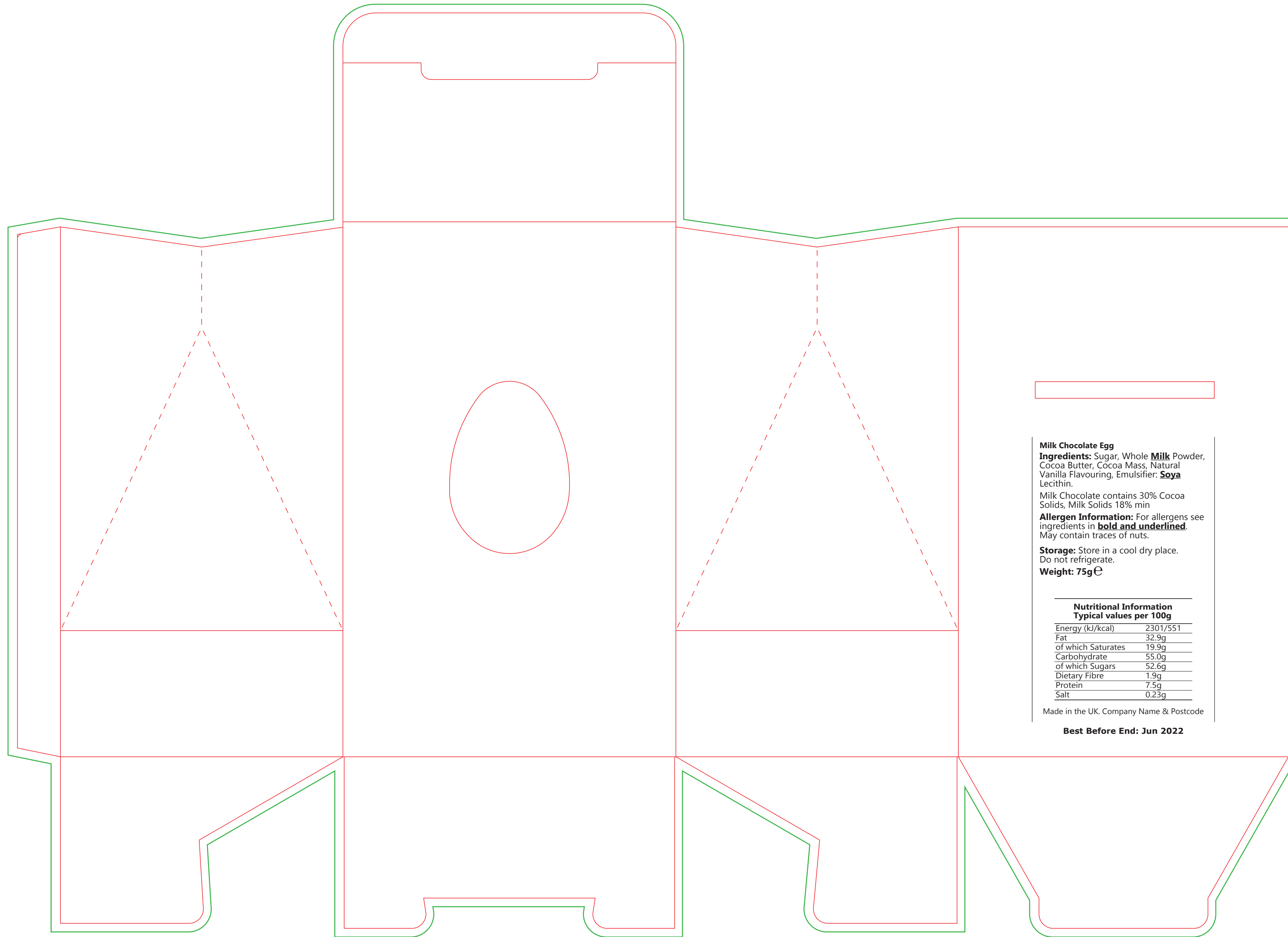
3. Text/Fonts. To avoid missing font issues please either:
Convert your text to outlines
or,
send the relevant font files with your artwork.

4. Template lines. Please create your artwork on a different layer to the cut, bleed and fold lines. If you're saving to a single layer file such as a Jpeg then remove these lines when you have positioned your elements and before sending us your artwork.

5. Traceability

If your product is for resale, please don't forget this! (It's a legal requirement). Replace the text "Company Name" and "Company Postcode" with your company's name and postcode

"If you're selling food in Great Britain (England, Wales and Scotland), you must also include the name and address of the UK or EU business responsible for the information on the food. If the business is not in the UK or EU, you must include the name and address of the importer."
<https://www.gov.uk/food-labelling-and-packaging/food-labelling-what-you-must-show>



Milk Chocolate Egg
Ingredients: Sugar, Whole **Milk** Powder, Cocoa Butter, Cocoa Mass, Natural Vanilla Flavouring, Emulsifier: **Soya** Lecithin.

Milk Chocolate contains 30% Cocoa Solids, Milk Solids 18% min

Allergen Information: For allergens see ingredients in **bold and underlined**. May contain traces of nuts.

Storage: Store in a cool dry place. Do not refrigerate.

Weight: 75g e

Nutritional Information Typical values per 100g

Energy (kJ/kcal)	2301/551
Fat	32.9g
of which Saturates	19.9g
Carbohydrate	55.0g
of which Sugars	52.6g
Dietary Fibre	1.9g
Protein	7.5g
Salt	0.23g

Made in the UK. Company Name & Postcode

Best Before End: Jun 2022